

Elecro Flow-Line



Robust, Universal - All Application Electric Pool & Spa Heater

Technical Specification

- Flow Tube: Stainless Steel BS-316 Or Pure Titanium
- Heating Elements: Incoloy 825 Or Pure Titanium
- Reversible Flow Switch - Requires only 1,000-litres per hour
- 0-40°C Analogue Control Thermostat With 1°C differential
- High Limit Safety Thermostat 55°C Manual Reset
- Vortex Chamber
- Fully pre-wired to internal terminal block, requiring only final connection to a contactor
- Electrical housing made from flame retardant UV stabilised ABS
- 1½" BSP female threaded water connection (unions are supplied to allow solvent weld connection to 50-mm pipe work)

230V Single Phase

S/Steel Code	Titanium Code	kW
802B	T82B	2-kW
803B	T83B	3-kW
804B	T84B	4.5-kW
806B	T86B	6-kW
809B	T89B	9-kW
80AB	T8AB	12-kW

400V 3 Phase

S/Steel Code	Titanium Code	kW
836B	T36B	6-kW
839B	T39B	9-kW
83AB	T3AB	12-kW
83BB	T3BB	15-kW
83CB	T3CB	18-kW
83DB	T3DB	25-kW

Evolution Pool Heater

Designed For Safety, Easy Installation & High Efficiency

Available in Titanium For Salt Water Pools



Or Stainless Steel For Chlorinated Pools



Elecro heaters are suitable for use with all types of swimming pools and filtration systems. Fully pre-wired including contactor, Elecro heaters are simple to install requiring only final connection to a mandatory separate RCD.

Unique design end fitting incorporates a weir chamber to induce vortexing of through flowing water to ensure total air purging is achieved in low flow situations.

External reversible flow switch allows input (flow) from either direction.

Technical Specification

Heating Elements	Incoloy 825 Or Pure Titanium
Flow Tube	Stainless Steel BS316 or Pure Titanium
Control Thermostat	0-40°C with 1°C Differential
Safety Thermostat	55°C Manual Reset
Flow Requirement	Min = 1,000-litres per hour Max= 13,000-litres per hour
Electrical Enclosure	ABS Fire Retardant to VO rating

Power	S/Steel No Timer	S/Steel With Timer	Titanium No Timer	Titanium With Timer
2-kW 230V	802	872	T82	T72
3-kW 230V	803	873	T83	T73
4.5-kW 230V	804	874	T84	T74
6-kW 230V	806	876	T86	T76
9-kW 230V	809	879	T89	T79
12-kW 230V	80A	87A	T8A	T7A
15-kW 230V	80B	87B	T8B	T7B
18-kW 230V	80C	87C	N/A	N/A
6-kW 3 Phase	836	886	T36	T46
9-kW 3 Phase	839	889	T39	T49
12-kW 3 Phase	83A	88A	T3A	T4A
15-kW 3 Phase	83B	88B	T3B	T4B
18-kW 3 Phase	83C	88C	T3C	T4C

Also available as Plug & Play

Heater sizes 2-kW & 3-kW also available as plug & play including in-line RCD - (earth fault circuit breaker)

Product Code	Description
802P	2-kW Stainless Heater P&P including RCD
803P	3-kW Stainless Heater P&P including RCD
872P	2-kW Stainless Heater P&P including RCD & built in timer
873P	3-kW Stainless Heater P&P including RCD & built in timer
T82P	2-kW Titanium heater P&P including RCD
T83P	3-kW Titanium heater P&P including RCD
T72P	2-kW Titanium heater P&P including RCD & built in timer
T73P	3-kW Titanium heater P&P including RCD & built in timer

In-Line+ Digital Pool Heater

*State Of
The Art*

The Ultimate Cost Effective Solution To Heating & Pump Control

Available In Titanium For Salt Water Pools



Or Stainless Steel For Chlorinated Pools



The new Elecro In-Line+ digital pool heater has been developed primarily to provide a compact and ultimately efficient heating & control solution for all types of pool. Featuring a powerful, versatile multi-function processor designed specifically to take control of the pool filtration pump. The heater is supplied complete with pump interlock cable that is pre-wired to the heater control circuit.

www.elecre.co.uk

Key Features

- Priority heating
- Timed pump control
- Accurate temperature control to 0.5°C
- Digital display to 0.1°C
- Timed heater control with 4 On & Off settings
- 2 programmable set points to utilise off-peak electricity
- Diagnostic display
- Safety control circuit
- Integral industrial contactor
- High limit safety thermostat 55°C manual reset
- Reversible flow switch

Power	Stainless Steel	Titanium
2-kW 230V	802D	T82D
3-kW 230V	803D	T83D
4.5-kW 230V	804D	T84D
6-W 230V	806D	T86D
9-kW 230V	809D	T89D
12-kW 230V	80AD	T8AD
15-kW 230V	80BD	T8BD
18-kW 230V	80CD	N/A
6-kW 3 Phase	836D	T36D
9-kW 3 Phase	839D	T39D
12-kW 3 Phase	83AD	T3AD
15-kW 3 Phase	83BD	T3BD
18-kW 3 Phase	83CD	T3CD

Also Available As Plug & Play

Heater sizes 2-kW & 3-kW also available as plug & play including in-line RCD - (earth fault circuit breaker)

Product Code	Description
802DP	2-kW S/Steel In-Line+ Digital Heater P&P including RCD
803DP	3-kW S/Steel In-Line+ Digital Heater P&P including RCD
T82DP	2-kW Titanium In-Line+ Digital Heater P&P including RCD
T83DP	3-kW Titanium In-Line+ Digital Heater P&P including RCD

Electro Swimming Pool Heat Pumps

The Ultra Efficient Way to Heat Your Pool



**All heat pumps fully supported
by Electro complete with 3-Year
parts & labour Guarantee**

Key Features:

- **Titanium Heat Exchanger**
Total protection against corrosion, full-flow - no by-pass required. Zero corrosion defect 10-year guarantee.
- **Scroll Compressor**
Efficient, reliable and silent
- **Whisper Quiet Fan**
Low speed, tuned for maximum airflow and minimum noise
- **Largest Evaporator**
Enables higher performance. Epoxy coated for protection against corrosion
- **Digital Control**
State of the art, easily programmable with full diagnostic display

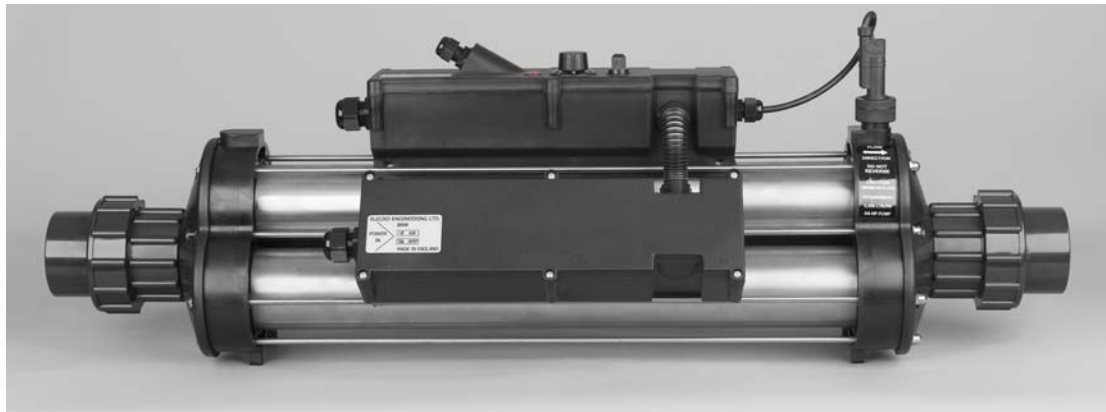
Electro Heat pumps are the most efficient and reliable swimming pool heat pumps available. Built to the highest possible standards Electro Heat Pumps absorb heat from the air and transfer it to the pool water — making the heating process clean, efficient, ecological and most of all, cost effective.

All Electro Heat Pumps feature state of the art technology and are built using the highest quality components to ensure ultimate performance and reliability.

Model	40K BTU	65K BTU	100K BTU
Power Output (kW)	11.7-kW	19-kW	29-kW
Power Consumption (kW)	2.0	3.4	5.2
COP (Coefficient of Performance)	5.9	5.6	5.6
Power Supply Voltage-Phase-Hz	220/240-1-50	220/240-1-50	220/240-1-50
Amperage	19	27	41
Circuit Breaker	30	40	60
Pipe Work Connections	1.5" / 2"	1.5" / 2"	1.5" / 2"
Dimensions (cm)	82 x 82 x 87	82 x 82 x 87	82 x 82 x 102

The above table is based on ambient air temperature & water temperature @ 25°C

Tri-Therm Heaters



Power Output Options

Total Heater Power Output	Number of Banks	Power Output of Each Bank	Amp (each bank)
24-kW	2	12-kW	18
30-kW	2	15-kW	22
36-kW	2	18-kW	26
45-kW	3	15-kW	22
54-kW	3	18-kW	26
72-kW	4	18-kW	26

Technical Specifications

Maximum Pressure	3-Bar
Minimum Flow Rate	7,000-litres per hour
Maximum Flow Rate	40,000-litres per hour
Heating Elements	Incoloy 825 (MAX 18 W/cm ²) Pre wired to terminal blocks
Flow Tubes (x 3)	Stainless Steel BS316
Manifolds & Enclosures	ABS Flame retardant UV stabilised
Water Connections	63-mm - Also supplied with 2" adapter unions for solvent weld connection

Control Circuit

230 Volt series wired to control terminal block, with no volt switch output - neutral required.

Quantity	Description
1	0°C to 40°C Control Thermostat 1.2°C Differential
1	55°C Pre-Set High Limiting Manual Reset Thermostat
1	Flow Switch Pre-Set 7,000-litres per hour (1,550 UK Gallons per hour).
2	55°C Pre-Set Automatic Reset High Limiting Thermostat
1	Slave relay



Pool-Smart

NEW

Intelligent Pool Control System

Save Up To 27% On Fuel Bills

The Pool-Smart from Elecro is the intelligent pool control system that allows you to control and maintain your pool to the perfect temperature as economically as possible.

The complete Control Solution For:

- Filtration Pumps
- Electric Heaters
- Heat Exchangers
- Heat Pumps

Features:

- Priority Heating
- Accurate Temperature Control to 0.5°C
- Diagnostic Display
- Fully Programmable With Timed Control
- User Defined Dual Set Points to utilise off-peak electricity rates

The Pool-Smart is supplied fully equipped with flow switch, temperature sensor probe pre-fitted in custom T-Piece with 63-mm solvent weld connections (50-mm reducers are also supplied), for simple integration into any pool technical facility.

Product Code	Description
PSC	Pool-Smart Controller Complete With T-Piece Incorporating Flow Swith & Temperature Sensing Probe

**For Efficient Control And Operation
Of Your Pool Equipment**

www.electro.co.uk

Salt - Water Sanitisation System Crystal Clear LUXURY



Eliminate the risks associated with traditional chemical sanitisation

- No problems with eye or skin irritation or allergies
- Save over 90% on traditional chemical treatment costs
- Natural salt in balance with the human eye
- Minimal maintenance costs
- Proven reliability

Key Features

- Market leading
- Switchmode power supply
- Lightweight
- Compact & Easy to install
- Programmable polarity system according to water hardness
- Bipolar self-cleaning cell

Product Code	Pool Volume	Chlorine Production (g/h)	Electrical Consumption
SM20	0 to 100,000-litres	22	100W
SM30	100,000 to 170,000-litres	33	150W

The most simple & economical way to treat your pool

www.elecro.co.uk

Pro Pool UV110



For Professional UV Pool Water Treatment

- Reduces use of chlorine and other chemical treatments by up to 80%
- Controls bacteria and other micro-organisms and pathogens
- Destroys harmful chloramines
- No problems with eye or skin irritation
- Low maintenance and running costs
- Improved water clarity
- All plastic design manufactured in the UK from non toxic, UV and impact resistant ABS
- Universal 2" and 63-mm solvent weld water connections
- Easily wall mountable and supplied complete with 5m cable

Product Code	UV110
Lamp Output	2 x 55W (110W Total)
UV-C Output	2 x 18W (36W Total)
Lamp Life	8000 Hours
Voltage & Frequency	120V—240V 50/60Hz
Max Flow Rate	36,000-litres per hour
Maximum Pool Size	100,000-litres
Maximum Operating Pressure	3-Bar

V² Vecton Spa UV Steriliser

The Professional Choice



New Generation Efficient, Reliable Spa Sanitising

- Compact design to enable installation on any Spa
- Reduce chemical costs by up to 80%
- Manufactured in the UK from impact resistant, translucent polycarbonate
- Incorporates the unique **LITE-SET** technology - a tricolour neon lamp life indicator which alerts user when UV lamp needs to be replaced
- Supplied complete with **LITE-SET** torch to reset lamp life indicator after changing UV lamp
- Opposing inlet and outlet for easy installation and connection
- Four stage hosetails for flexible hose from 1½" to 1¼" held in place with screw on collars for easy removal when servicing and maintaining unit. Optional rigid pipe work adapters are also available.
- 36 Month guarantee

Product Code	Spa Volume
V2-750	750-litres
V2-950	950-litres
V2-1250	1,250-litres
V2-1750	1,750-litres